



# Sustainable Expansion of the Applied Coastal and Marine Sectors

Dr Victoria Hobson



# What is SEACAMS?

A marine science programme for the benefit of Wales

Partnership between:



- “Promote innovation and expansion of the coastal and marine sectors in Convergence Region of Wales”
- Bangor, Aberystwyth and Swansea Universities
- 28 project staff
- 2010 – 2015



# SEACAMS can offer businesses:

- New Product Development
- Prototype Testing
- Bespoke Research
- Environmental Management Systems
- Technical Expertise
- Laboratory Facilities
- Access to specialised equipment
- Access to a Fleet of Research Vessels
- Office Accommodation



# Available resources for coastal work

RV Noctiluca



Inshore research vessels fitted with loggers for measurement of

- chlorophyll
- dissolved oxygen
- pH
- salinity
- temperature



## Example services:

- Environmental impact assessment (EIA) of marine renewable energy structures
- EIA of inshore fishing operations
- Water quality monitoring
- Effects of oil pollution on intertidal organisms
- Health monitoring of commercially important marine species
- Monitoring of marine animal movements

# SEACAMS Expertise

## Coastal Oceanography

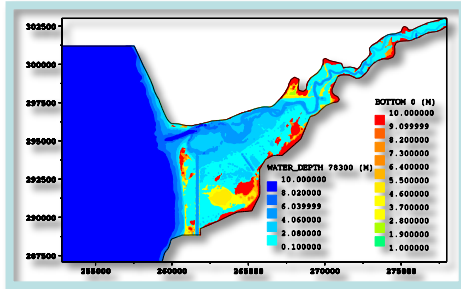
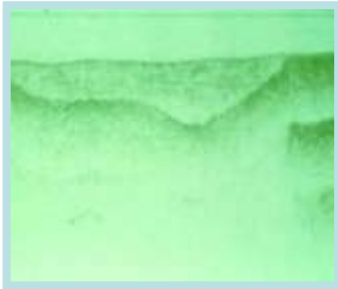
- Environmental impacts of offshore installations
- Surveys & modelling of coastal morphology
- Geological investigations

## Water Quality

- Water Pollution
- Ecosystem Health & Management
- Coastal Water Quality

## Marine Ecosystems

- Coastal Surveys
- Off-Shore Environments
- Conservation Issues
- Marine Animal Monitoring



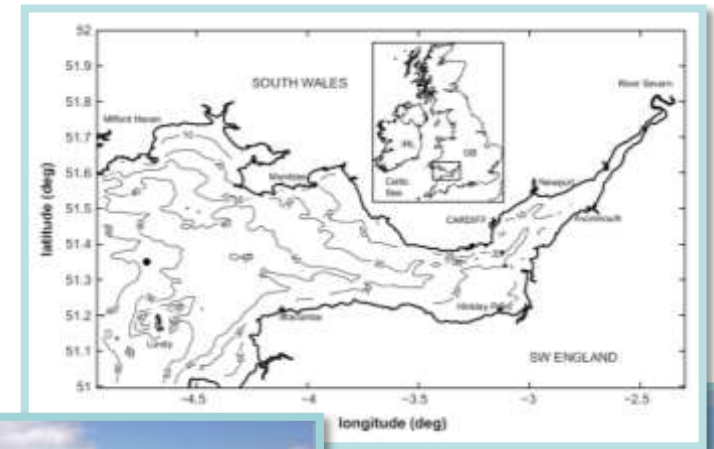
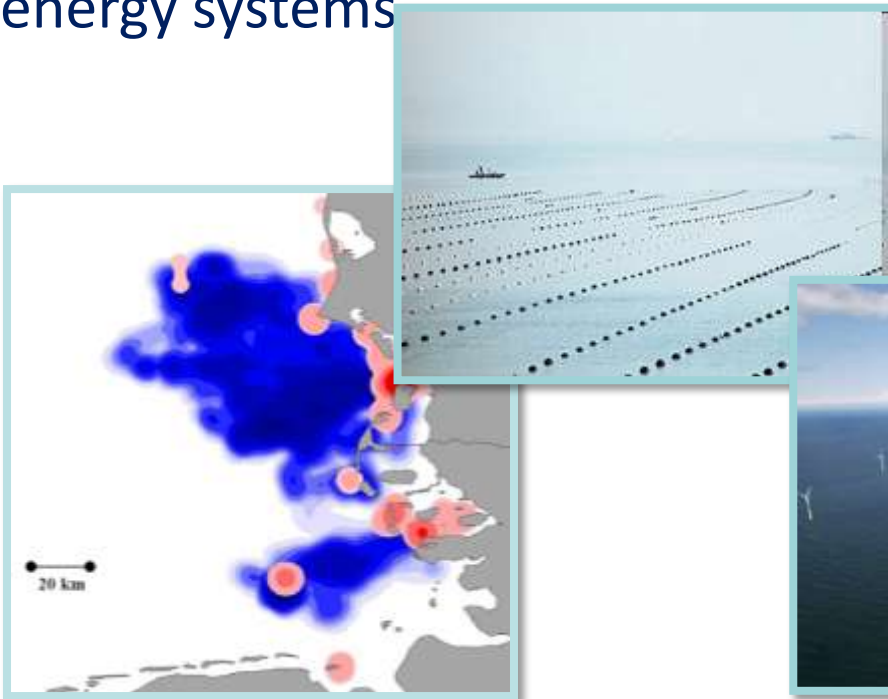
## Catchment Processes

- Integrated Catchment Management
- Coastal Environments
- Soil Erosion & Land Degradation
- River Processes & Dynamics



# Impacts & opportunities for marine energy

Measuring and modelling ecological effects of offshore wind turbines, barrages, tidal impoundments, tidal stream and wave energy systems





# Sustainable Expansion of the Applied Coastal and Marine Sectors

[www.seacams.ac.uk](http://www.seacams.ac.uk)

[v.j.hobson@swansea.ac.uk](mailto:v.j.hobson@swansea.ac.uk)

